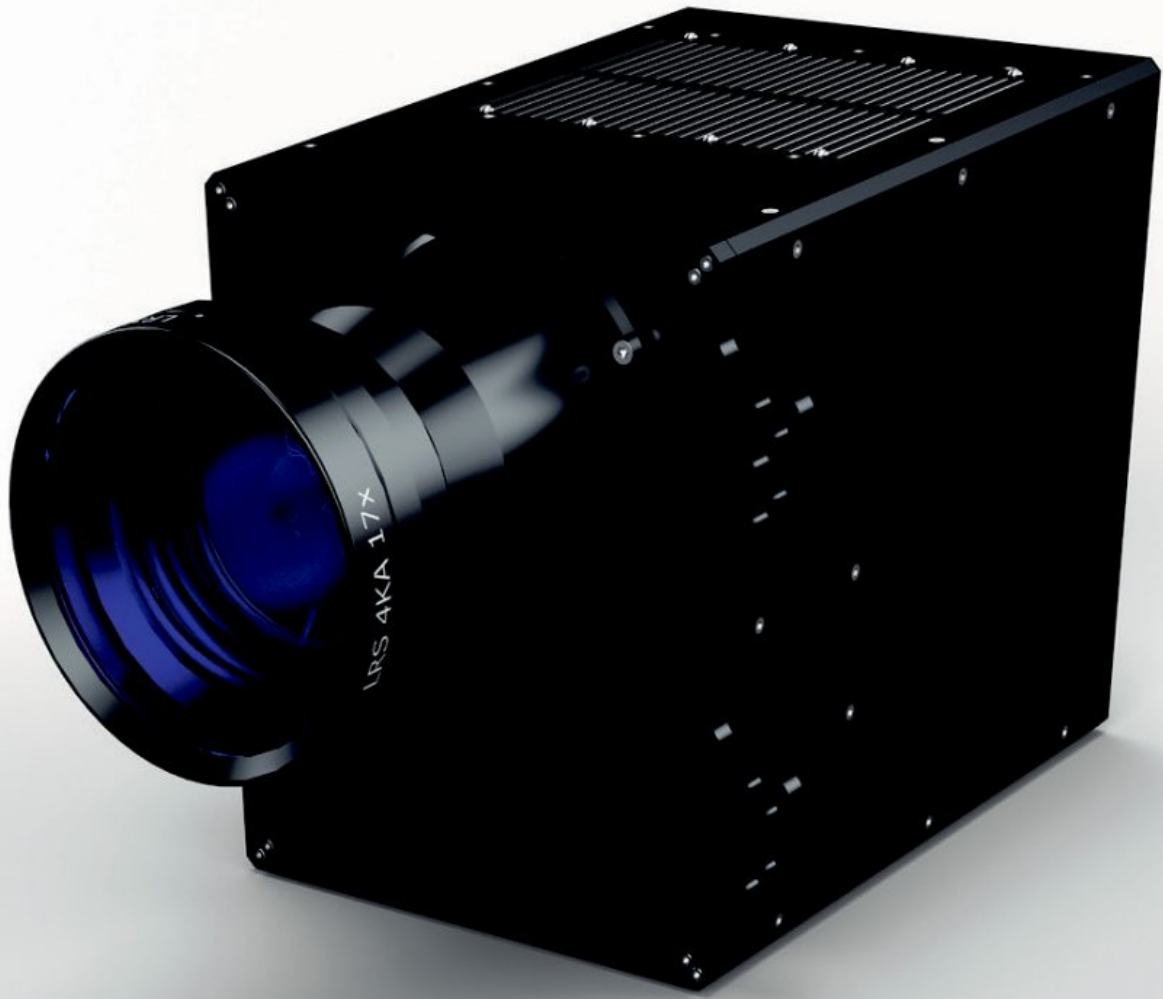


THE NEW LUXBEAM® RAPID SYSTEM (LRS) – FOR 4K APPLICATIONS IN RAPID MANUFACTURING!

Posted on January 24, 2019



The LUXBEAM® Rapid System LRS-4KA is a DLP®-based stereolithography subsystem with exceptional 4K resolution capabilities, designed for additive manufacturing of the highest resolution parts.

In addition, the LRS-4KA's lens selection supports varying build area sizes and high building speed – thanks to dedicated UV optics and high-power UV LEDs.

The LRS-4KA system projects UHD-4K images by using an optical actuator. It also provides a mode for displaying WQXGA native resolution.

The 4K projector is specifically designed for static implementation in additive manufacturing systems. It offers a long lifetime and competitive costs in combination with the actuator supporting the high-resolution DLP660 chip.

Taking advantage of the LRS-4KA light engine's highly competitive plug-and-play system module, customers can design, build, and brand a rapid manufacturing machine within a limited time to market and with minimal technical risk. In addition, Visitech offers remote and on-site support for system integration.

The system is configurable with different high-power UV LED options and a selection of dedicated UV projection lenses. Further, a selection of already designed imaging lenses at different magnifications is optionally available upon request.